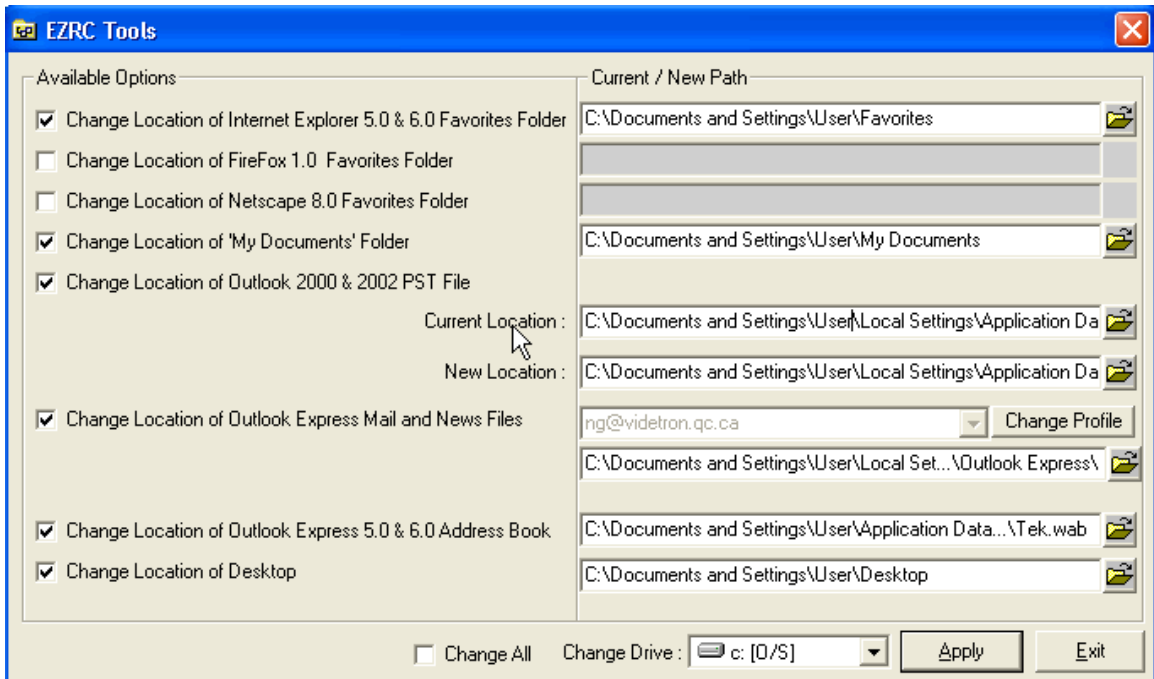


EZRC Tools for moving the dynamic files

The EZRC Tools will help you to move dynamic files such as store folder, content and definitions to a different location (unprotected).

Note : Before installing EZRC Tools, we recommend to install the EZRecoveryCard and use the **Boot Without Recovery < Ctrl-Enter >** function when we want to keep temporary changes made by EZRC Tools.

- Install EZRC Tools (EZRCTools.msi) in path D:\ Program Files\EZRCTools\
- By double clicking EZRCTools icon on desktop, the following screen will appears :



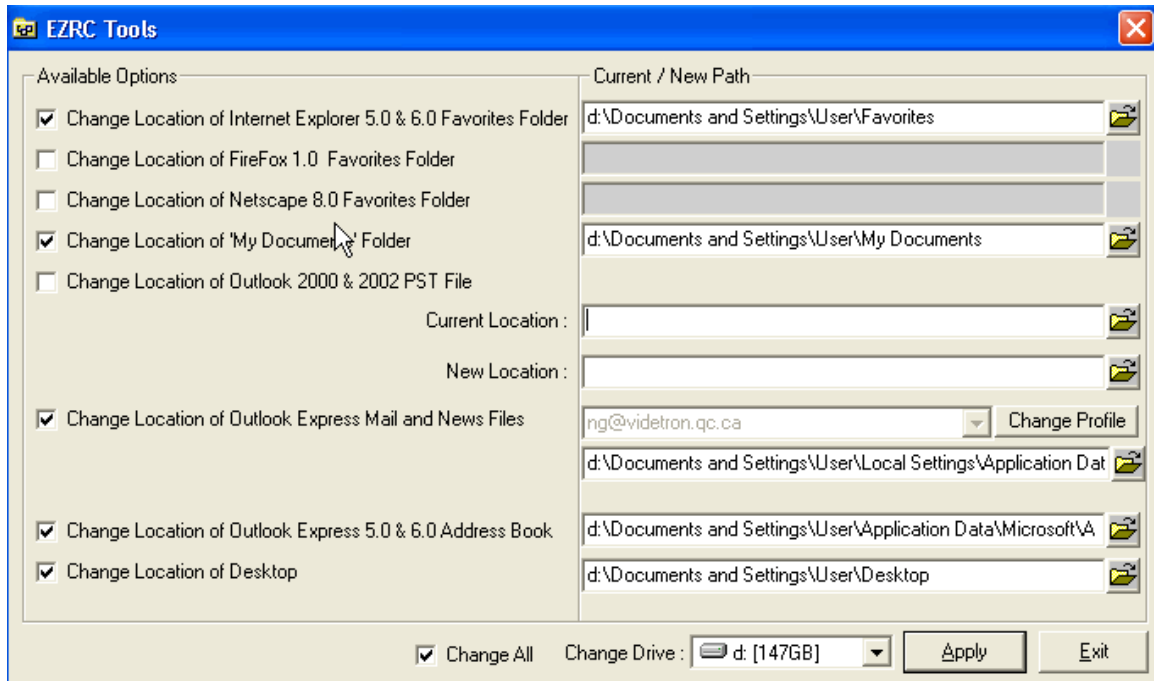
EZRC Tools will auto-detect data folder shown above. Only Outlook folder need to be pointed manually, the default path is :

< C:\Documents and Settings\UserProfile\Local Settings\Application Data\Microsoft\Outlook.pst >

Note : In order that data folder to be created for Outlook Express and Outlook (in a fresh install of Windows), we need to open both applications, cancel configuration step and close the applications. This procedure should be done before using EZRC Tools.

SYSTEM AND DATA RECOVERY CARD TECHNOLOGY

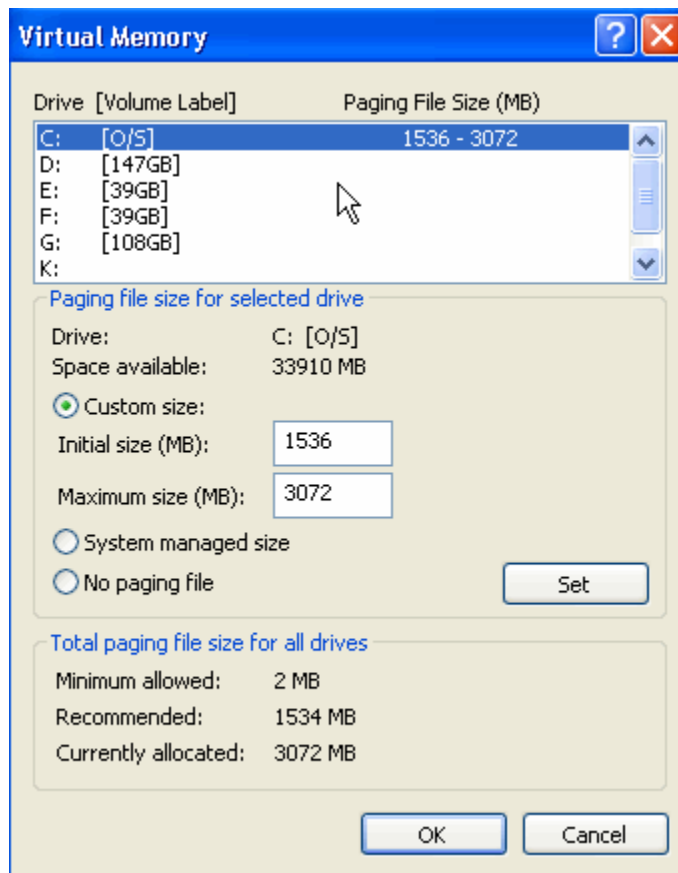
- Put check on < **Change All** > and in < **Change Drive** > instead of < **C** > change to < **D** >.
- By changing to < **D** >, you should see the following screen :



- Click on **Apply** and wait until the process finish
- Restart the computer in order to let changes to take effect

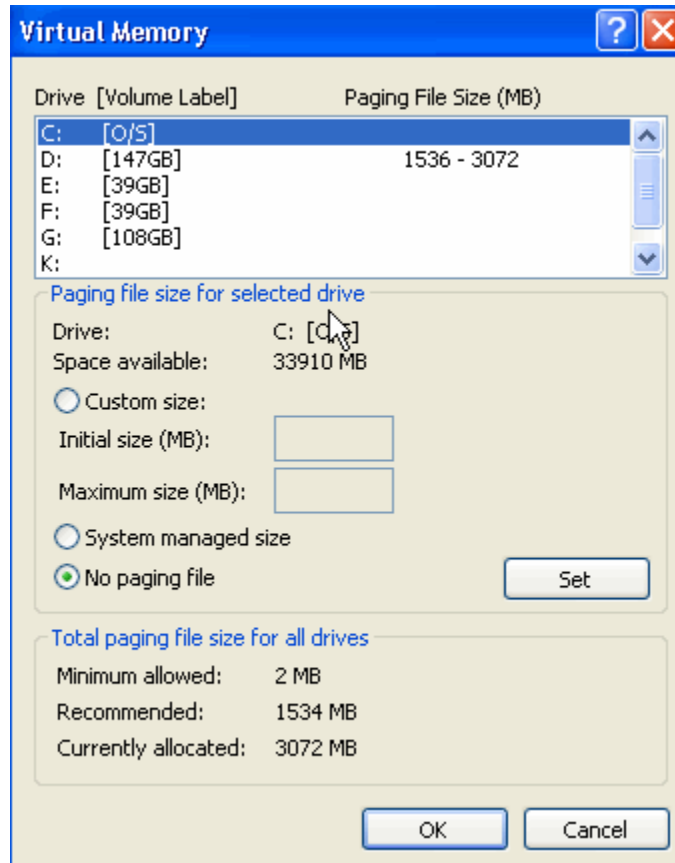
Moving < Pagefile.sys to partition >d:\ (unprotected)

- Right click on < **Computer** > icon on desktop and click on < **properties** >
- Click on < **Advanced** > Tab and under Performance menu, click on < **Setting** >
- Click on < **Advanced** > Tab in Performance options menu and under Virtual memory menu click on < **Changes** >



SYSTEM AND DATA RECOVERY CARD TECHNOLOGY

- Click on < **D** > drive, select **Custom size** at 1536-3072 and click on < **Set** > (**Custom size** depend on the size of the system ram)
- Click on < **C** > drive, select **No paging file** and click on < **Set** >



- Click on < **OK** > system will ask you to restart the Windows in order to take effect